

Dansensor® CheckPoint 3

NEW REVOLUTIONARY SENSOR TECHNOLOGY



Benefits

- No PC software required
- Easy to use
- Improves MAP quality control
- Better process efficiency
- Greater business transparency
- Secures your brand's reputation
- Highest level of portable analyzer
- Low cost of ownership
- No daily 20.9% calibration

Features

- **NEW** Ceramic solid state O₂ sensor
- O₂ or combined O₂/CO₂ measurements
- Gas flow alarm
- Data collection/transfer via WiFi
- Fast processing
- Easy-to-read 3.5" color touchscreen
- Uses standard, low-cost needles
- Optional stainless steel needles
- Data package, 1 million data logs (optional)
- 3 years warranty on sensor
- Protection cover (optional)
- Multiple languages
- Graphic statistics

Portable gas analyzer for quality control of Modified Atmosphere Packages (MAP)

The new Dansensor® CheckPoint 3 is the most advanced portable gas analyzer on the market, enabling you to quickly and easily check for O₂ and CO₂ levels in Modified Atmosphere Packages (MAP) of any shape and size.

With the new long-lasting sensor, the Dansensor CheckPoint 3 delivers the highest level of accuracy on portable analyzers, making the packaging process more reliable.

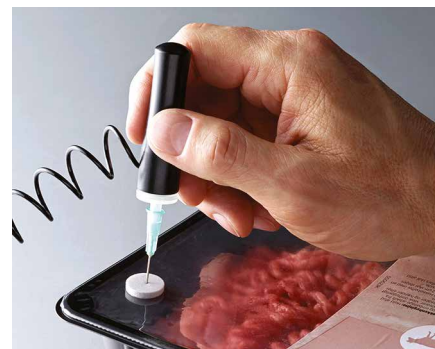
WiFi connectivity ensures a new unique user experience. With the web interface fast, easy and reliable data management is guaranteed. The high quality color screen combined with intuitive interface give a clear process overview and extremely easy testing traceability and transparency.

Dansensor CheckPoint 3 is perfect for productions looking for portability, best accuracy and just as important, a low cost of ownership.

HOW DOES IT WORK?

- 1:** Insert needle into the package through the septum. Start test with one touch button.
- 2:** A sample will be drawn into the sensor. A few seconds later the Dansensor CheckPoint 3 will tell you the O₂ and CO₂ level inside the package.
- 3:** Result can be collected manually or automatically. Stored data can be transferred via WiFi to your company database.
- 4:** The web interface provides statistic data for various documentation purposes.

Samples are taken with easy replaceable and low-cost needles

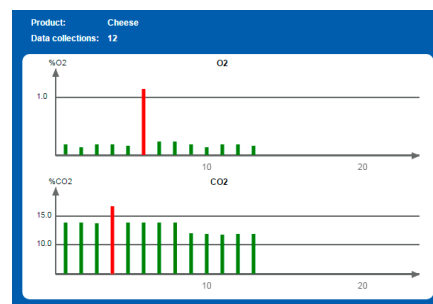


Dash-gastec-CheckPoint 3-EN-5

Dansensor CheckPoint 3 Model Overview

Model	WiFi	User setup	Warranty sensor	Gas flow alarm	Users	Products	Readings
CheckPoint 3			3 years	●	1	1	1
CheckPoint 3 Premium	●	●	3 years	●	10	100	10000
CheckPoint 3 Premium data pack	●	●	3 years	●	100	1000	1 million

Note: No upgrade possible from Dansensor CheckPoint 3 Premium to Dansensor CheckPoint 3 Premium with data pack.



Technical Specifications

Available configurations	O ₂ (Ceramic solid state sensor)	O ₂ & CO ₂ (infrared single beam sensor)
Sample volume	5 ml	5 ml
Sample time	9 sec	9 sec
Measuring range	0-85%	0-100% (on CO ₂ sensor)
Resolution	0.1% oxygen	0.1% oxygen and carbon dioxide
Sensor accuracy at 1% O ₂ and 20% CO ₂	Better than ± 0.1% or ± 2% of readout	O ₂ : Better than ± 0.1% or ± 2% of readout CO ₂ : Better than ± 2% carbon dioxide
Heating time	5 sec	5 sec
Dimensions & weight	75 x 100 x 175 mm (H x W x D) 0.7 kg	
Power supply	Battery powered, recharge time max 5 hours, ready for 2,000 measurements	
Options	Standard consumable kit (1 sampling kit, 1000 septums, 10 needles (Ø 0.8) & 10 water trap filters), metal needles	
Connections	WiFi (WPA, WPA 2, WPA enterprise)	
Calibration and service	12 months	
Expected sensor lifetime	O ₂ > 3 years CO ₂ > 5 years	
Working temperature	0 - 40 °C	
Compatibility	RoHS, China RoHS, CE	
Data package	Extended memory - up to 1 million measurements	
What's included in the box?	100 septums, 10 needles (Ø 0.8), 10 water trap filters, power supply w/interchangeable plugs (US, EU, AU, UK)	

Specifications subject to change without notice - further specifications are available in the User Guide.